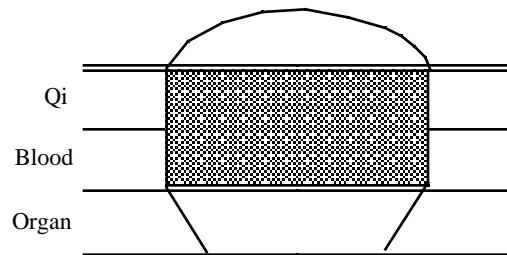


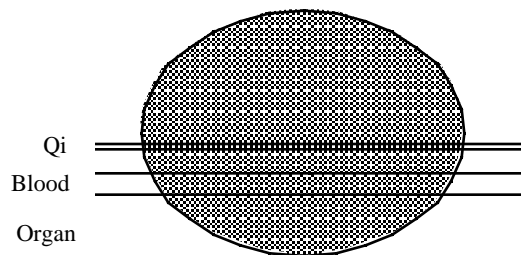
## The Blood Depth: Page 2



Full Overflowing: Here the pulse rises forcefully above the Qi depth.  
A Tense pulse indicates XS Heat in the Blood. A  
Tight pulse indicates Deficient Heat in the Blood.  
Generally Pounding.

SX: Hypertension following uncorrected Blood Heat condition.

Liver rising Fire: XS Heat-Tense  
Liver Yang surging: Deficient Heat-Tight  
Liver -Kidney Yin deficiency  
Spleen Damp  
Heart Stagnant Circulation



Ropey: Athero-Arteriosclerosis. Felt at all depths  
Causes: Excess Heat, Deficient Heat.